



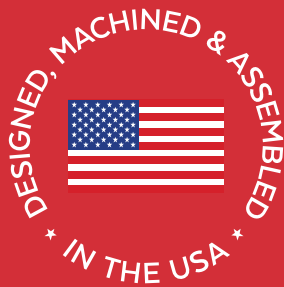
Competition Series

INSTALLATION GUIDE

ALL -10 FEMALE ORB PORTS

**APPLICATION:
COMP-360G**

**360GPH
0-100 psi**





www.fassride.com

(866) 769.3747

Thank you for choosing FASS, from Diesel Performance Products, Inc.

FASS specializes in building extremely high-quality fuel products. We have earned an unsurpassed reputation for excellence in our industry by using only the highest-quality American-made components. In order to support our American workers and our American economy, more than 98+ percent of our products are manufactured completely in the United States.

Of course, that dedication to excellence comes at a price, but it is important to remember that price does not dictate quality-quality dictates price! We will never compromise by using cheaper, foreign-made components, like so many of our competitors do.

Customer satisfaction is our top priority and we strive always to provide outstanding customer service. Our Research and Development department, in conjunction with our Dealer Support Department, continually searches for ways to improve quality, expand our product line, and provide superb support. Our exclusive ViP Network ensures that customers receive the proper products and support at the local level. The extended one-year warranty is only available on products purchased from the network. There is no warranty on products not purchased outside the network.

IMPORTANT:

In order to qualify for the one-year extended warranty, your product registration form and proof of purchase from an authorized dealer must be submitted to FASS Fuel Systems within 30 days of purchase. Failure to comply will void the warranty. We have the right to deny any warranty believed to be false, altered or purchased through an unauthorized or terminated dealer. A current list of authorized dealers can be found on our website, FASSRide.com.

**For more information,
contact Technical Support:
Diesel Performance Products, Inc.
16234 State Hwy O.
Marthasville, MO 63357
636-433-5410**



WARNING!

This product has NO WARRANTY unless:

- 1. It has been purchased from an **Authorized** or **ViP FASS Dealer**. If in doubt, check www.FASSRide.com.**
- 2. It is registered within thirty (30) days of purchase.**

Other conditions may apply. Please see full warranty information.

ATTENTION!

Before you begin installation

Register for your Warranty ONLINE at

<https://www.fassride.com/register-a-warranty/>

No online access, call our TECH Support at

1-866-769-3747

FOLLOW THESE STEPS TO ENSURE A SIMPLE, CORRECT INSTALLATION OF YOUR NEW TITANIUM FUEL SYSTEM

ATTENTION:

Be sure to identify the proper FASS System and fuel line configuration. For help, our product finder can be found at www.FASSride.com. Follow the instructions to see fuel line detail.

- 1** Be sure the serial number on this installation manual matches that on the outside of the box.
- 2** Pay close attention to ALL WARNINGS
- 3** Read all instructions before starting installation of this product.
- 4** Inventory the package components. Notify the place of purchase immediately of any parts missing or damaged.
- 5** The installation recommendations contained herein are guidelines. Use good judgment and take into consideration your vehicles' accessories.
- 6** For best results in accuracy and efficiency (due to training, communication, and our relationship with our dealer network), we recommend a VIP FASS dealer for the installation. They are prepared to install the FASS fuel pumps with the most efficiency. If a situation or problem arises during the installation, the dealer is prepared to handle it. Diesel Performance Products, Inc. is not responsible for any installation mistakes.
- 7** If you have any questions or concerns that cannot be addressed with your dealer, email or call FASS.

**If any installation procedure is uncertain, contact FASS technical support.
Call customer service at 636-433-5410,
or send us an e-mail: techsupport@FASSride.com
with the following information:**

Your name, address and daytime phone number

Model (**COMP-360G**)

Serial Number

Last 6 digits of vehicles' VIN

Date of purchase

Nature of Your Concern

Serial number

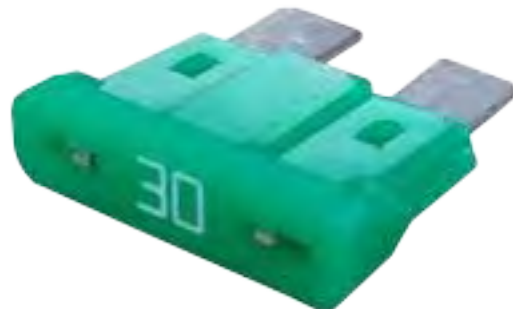


360 GPH

0-100 psi

ELECTRICAL RECOMMENDATIONS

- 1. WIRE SIZE - 10 GAUGE FOR EACH MOTOR.**
- 2. FUSE AMP RATING - (1) 30 AMP FUSE FOR EACH MOTOR!**
- 3. MOTOR CONNECTOR - Metri-Pack 630 Series.**



360 GPH

0-100 psi

FUEL LINE RECOMMENDATIONS

**ALL FUEL INLET AND OUTLET PORTS ARE
-10 FEMALE ORB!**

- 1. FASS INLET -12 (3/4" I.D.) at MINIMUM!**
- 2. FASS RETURN -10 (5/8" I.D.) at MINIMUM!**
- 3. FASS ENGINE FEED -10 (5/8" I.D.) at MIMIMUM!**



360 GPH

0-100 psi

PRESSURE REGULATOR PLUMBING

**TO FUEL CELL
or
FUEL TANK**



MOUNTING PACKAGE CONTENTS



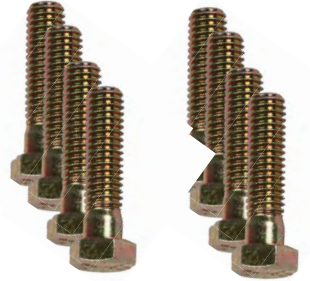
Five (5) WA-1001



Five (5) Hex bolts
1/4-20 1 3/4"



Eight (8) Locking
Nuts 3/8"



Four (4) Hex Bolts
3/8-16" x 1/2"



Eight (8) 3/8" WASHERS



DIELECTRIC GREASE

BR-2001



FPR-2001



TITANIUM FASS
SERIAL S 350803
Diesel Performance Products, Inc.

SEPARATOR
XWS-3002
Rated at 25 GPM
100 PSI Max
FASS Diesel Fuel Systems

PF-3001
Rated at 25 GPM
100 PSI Max
FASS Diesel Fuel Systems

BRACKET MOUNTING

